



Regional Parks Department
Division

SANTA ANA RIVER TRAIL

Phase III

Phase IV, Reaches A, B & C

Beahta Davis

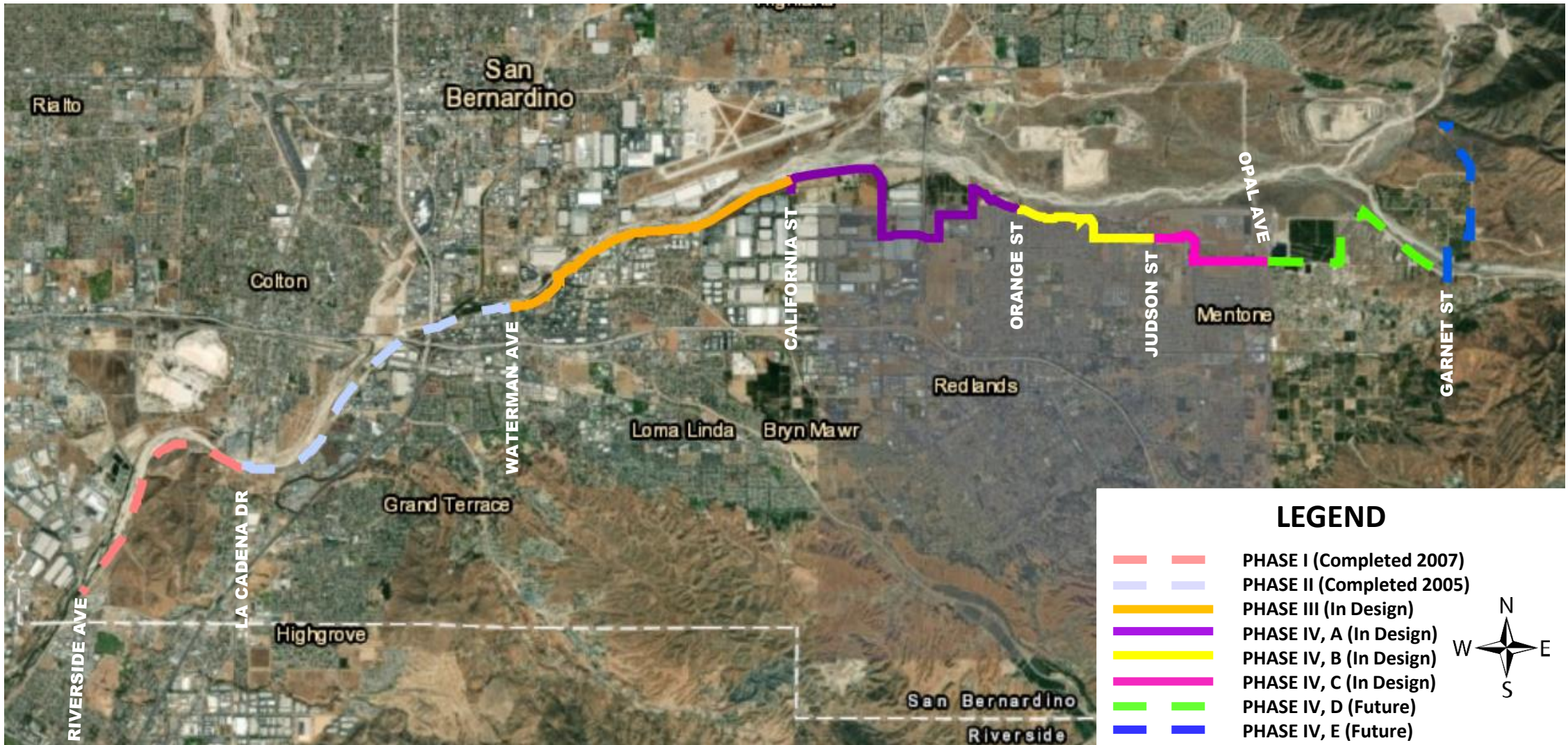
Director

6/25/20

The Santa Ana River Trail (SART) corridor extends over approximately 110 miles from the Pacific Ocean at Huntington Beach inland to the San Bernardino Mountains. Upon Completion, the SART will be the “Crest to Coast” regional trail link connection an area encompassing over four million residents in three counties (Orange, Riverside and San Bernardino).

The County of San Bernardino’s portion of the SART is 21.5 miles. This segment has been divided into four phases, and of that phase four has been divided into several segments. To date, the County has completed the construction of phases one and two covering approximately 8 miles of SART from the Riverside County line to just west of Waterman Avenue in San Bernardino. This non-vehicular trail will provide safe use and enjoyment of open space, environmental education and serve as an essential regional trail system.

SANTA ANA RIVER TRAIL



Overall Trail
within San Bernardino County

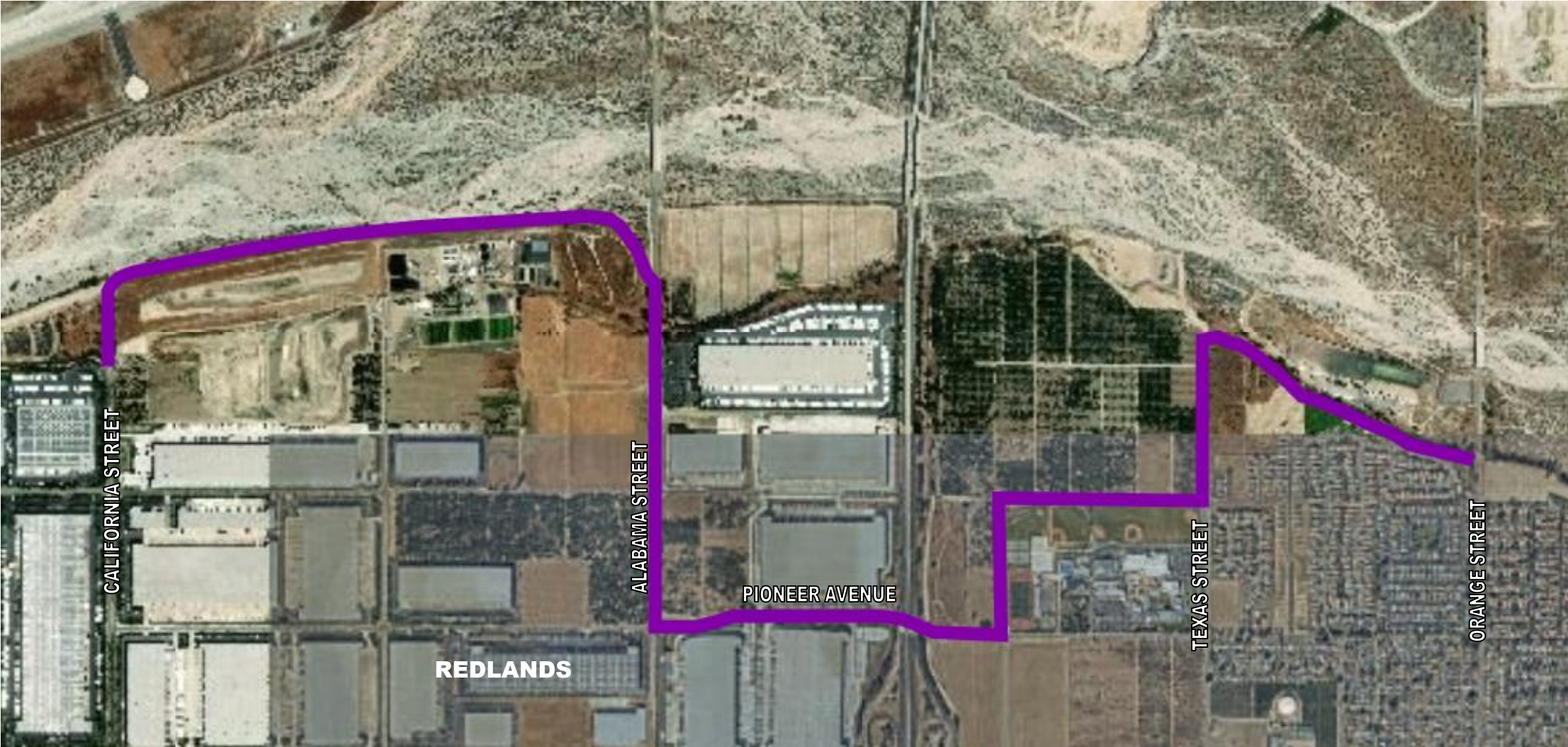
SANTA ANA RIVER TRAIL



Phase III
Waterman Avenue, San Bernardino to California Street, Redlands

Construction dependent on mitigation funding availability

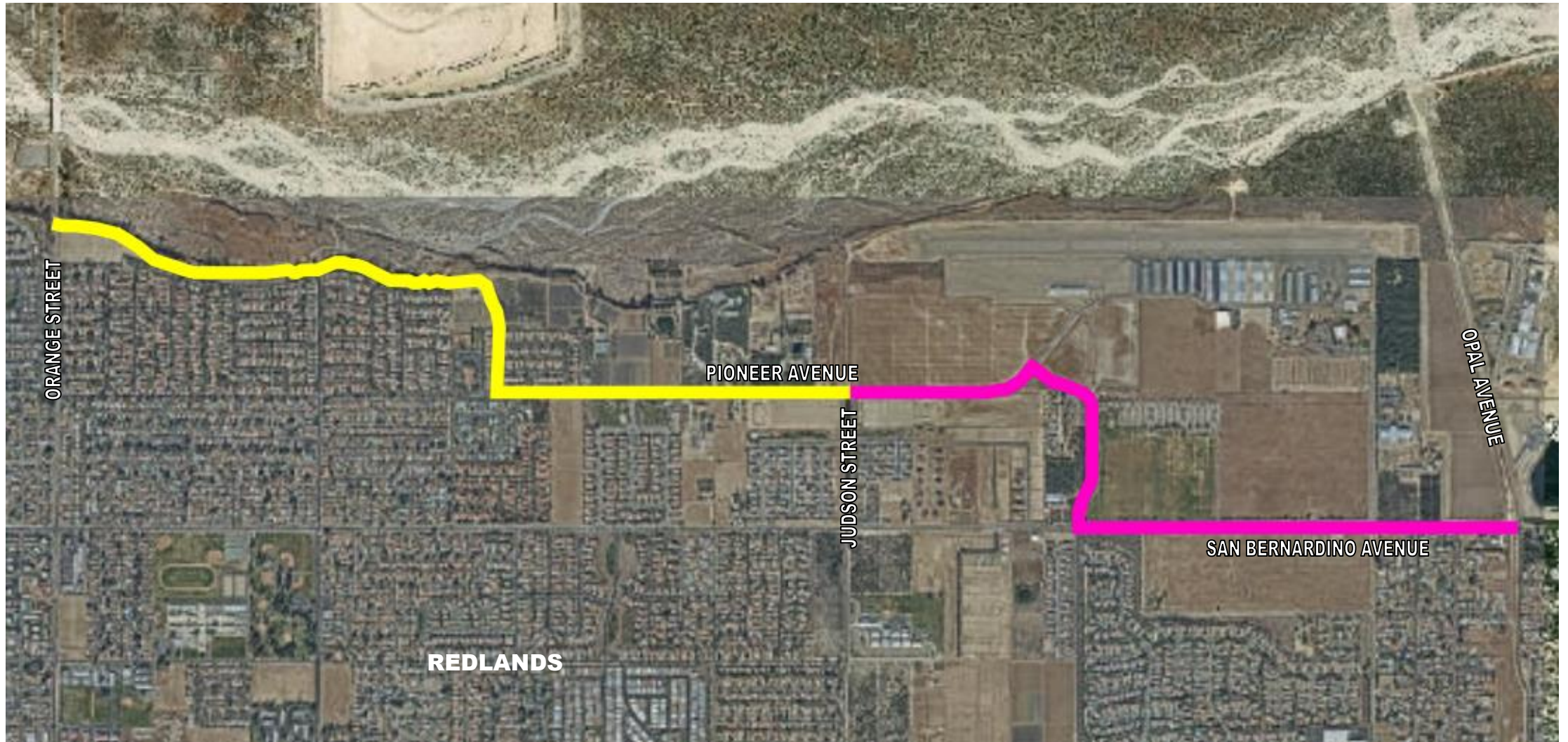
SANTA ANA RIVER TRAIL



Phase IV, Reach A
California Street to Orange Street, Redlands

Construction dependent on
funding availability

SANTA ANA RIVER TRAIL



Phase IV, Reaches B & C
Orange Street, Redlands to Opal Avenue, Mentone

Construction dependent on
funding availability