



Mrs. J. W. Davis  
1723 Robson Street  
Santa Monica, Calif



# MENTONE HERALD

Sec. 562, P.L.&R  
U.S. POSTAGE  
1c. Paid  
Mentone, Calif.  
Permit No. 5



SECOND YEAR, NO. 5, MENTONE, CALIF., THURSDAY, APRIL 13, 1950

## Mill Creek Electric Historic

## Pioneer Plant Blazed Power History in United States

### Harper Boy Injured

Johnnie Harper, year and one half old son of Mr. and Mrs. Carl Harper, 1342 Turquoise, met with an accident at 4 p.m. Tuesday and is reported in critical condition.

Mrs. Shirley Dahl, visiting the Harper residence, removed two children from her path before backing her car from the driveway. Johnnie somehow got under the rear wheel as the car was in motion. Dr. Winters was summoned and the boy was entered at the Redlands Community Hospital.

### An Old Fashion

by JUNNIUS PIERCE

If the present "OUTS" in Congress could center more of their attention on the scare of "Socialism" rather than on the scare of "Communist Spies in the Administration", it is believed they would have a better chance of becoming the "INS" in this mid-term election year instead of remaining the "OUTS."

It is true, the word "COMMUNISM" startles public attention to a greater degree of alertness than does the word "SOCIALISM." And, in an election year, anything that masters public attention is not to be overlooked by the candidate who aspires to public office.

Socialism might be regarded as a Purgatory in the transition from Liberty and Free Enterprise to Communism.

If a people once succumb to

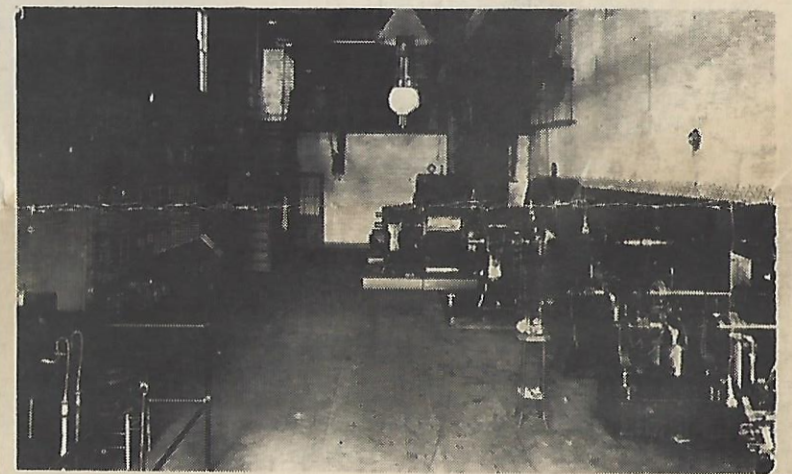
experience have proved to be basically sound.

Action by the Regents of the University of California in requiring its professors to subscribe to an oath of non-communism and by the Supreme Court in refusing an appeal by those convicted by the Congressional Un-American Activities Committee, is to be highly commended, provided, such action does not lull these two great institutions into the belief that they have also stamped out the fire of SOCIALISM.

If we are careful in the handling of the "Socialist" cigarette butt, we do not need to worry so much about a "COMMUNIST" forest fire. Just another "Old Fashion."

### Mentone Library Cultural Center

As a branch of the San Bernardino County Library the Mentone Library provides a service to the people of the community "who value education and wholesome recrea-



### Mill Creek No. 1, Shortly After Built

On Sept. 7, 1893, Mill Creek No. 1 hydro plant began operation as the first three phase hydro-electric plant in the United States. It blazed electrical history and laid the foundation for the great hydro-electric projects of the past 57 years.

The plant was built by the Redlands Electric Light and Power Company, one of the earliest parents of the Edison Company.

Electric generators were installed in the plant.

The Union Ice Company at Mentone was the first large power customer of the new company. Its 25 year contract made the building of the new plant possible.

The price was so cheap that the ice company could afford to pay \$2.00 per ton freight on 7000 tons of ice per year and still deliver it to Los Angeles at a rate of 50 cents

### Dr. Applewhite To Talk Here

The Mentone Chamber of Commerce announces a dinner meeting Monday, April 17th, at which Dr. Joseph Davis Applewhite, assistant professor of History at the University of Redlands, will speak. Those who have heard him will testify to a humorous and highly

Aside from the highlight, a very promising dinner will be served by members of the Woman's Club, with Mrs. Joseph P. Moore in charge.

The C. of C. meeting will be held in the Woman's Clubhouse at 6:30 p.m. and tickets at \$1.50 may be gotten from any of the Chamber board members. Any merchant will direct you to them and all persons interested are urged to procure tickets by Saturday as the seating will accommodate only 100.

Dr. Applewhite will speak about "George Washington - the Farmer." His education was in part at the University of St. Andrews in Scotland.

The many new people in Mentone, as well as others, are invited to attend this open meeting and get better acquainted with the Chamber of Commerce.

become dissatisfied, (as they are bound to---all that have tried it have) the alternative is Communism. To go back to a full application of Liberty and Free Enterprise would, so our Progressive friends tell us, be "REACTIONARY." And in this era of enlightenment, you must not be reactionary. To be so would stamp you as belonging to the "Horse and Buggy" age.

Even if when taking hold of a so-called Progressive idea you find it dragging you into water over your head, you must not turn back to solid ground. That would be "Reactionary." To be "Progressive", just keep on floundering deeper and deeper.

Progress doesn't necessarily involve making radical changes, but rather, the improvement in the practice and application of principles that time and

and gives direction to the cultural development of the community.

The Mentone branch is one of the fifty-two branch libraries in San Bernardino County. Sixty-three elementary schools and six high schools are also served. The county board of supervisors is responsible for establishing the county libraries, which are supported by a tax levied on all the area to be served.

February 1, 1914 was the beginning of the San Bernardino County library service. The first county librarian was Miss Caroline S. Waters, who served for more than twenty-eight years. Miss Helen Luce is the present county librarian.

The county library service ranges from community stations which contain about a hundred books housed in a general store or gas station to community branches which contain thousands of volumes housed in library buildings. These collections are changed regularly and frequently.

All teachers in San Bernardino county may use the facilities of the County Teachers' Library. Professional books, supplementary text books and periodicals are delivered to teachers by the School Department of the library.

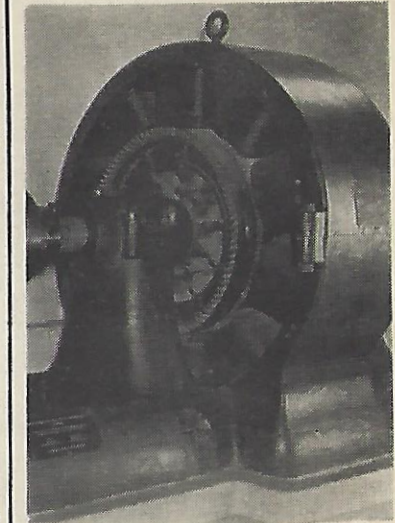
San Bernardino County Library also transforms a station wagon into a summer bookmobile, lending books directly to individuals living in locations not reached by fixed libraries. It is the desire of the county librarian that funds will be allotted to purchase a fully equipped bookmobile, to be manned by a driver and a certified librarian.

four years before, was a progressive town whose energetic civic leaders sought to develop its manufacturing possibilities. Because electric power would encourage industrial activity, they gave full backing to the Redlands Electric Light and Power Company, organized in 1892 by Henry H. Sinclair, Henry Fisher, Fulton J. Feraud, George H. Crafts and George B. Ellis.

The services of A.W. Decker, prominent electrical engineer, were secured to design a generating plant utilizing the waters of Mill Creek, a tributary of the Santa Ana River. After investigating the situation, Mr. Decker determined that operations should be carried out along lines radically different from those in general use. Difficulties were encountered in having three phase equipment manufactured because it was such a radical departure from standard practice. Success crowned the efforts of the electrical pioneers, however, and two 250 kw. 2400 volt, three phase General

be manufactured under the most favorable circumstances.

A single 120 kw. three phase synchronous motor constituted the ice plant's connected load.



In Redlands, energy from Mill Creek gave the first electric lighting to streets, stores, offices and churches, and supplied current for an elevator in a hotel, a motor in a meat market, and other power applications. Energy was

**SAVE** ON ETHYL GAS

**50c** NOW **23¢** GAL.

REG. GAS **21½¢** GAL.

**ACME**

**SERVICE STATION**

CORNER MENTONE BLVD. AND JASPER

OPERATOR O. R. BROWN

**MENTONE BUILDING MATL'S CO.**

1943 MENTONE BLVD. PHONE MENTONE 8-5305

EVERYTHING FOR THE BUILDER

**CRAFTON DAIRY**

1765 EAST CITRUS AVE.

CASH AND CARRY AT THE DAIRY

**16¢** qt.

Pasteurized or Homogenized

DELIVERY SERVICE BEFORE 8:00 A.M. - 19½¢ QT.

**You Spend Less for BETTER food...**  
*at our*  
**LOW PRICES!**



BISQUICK <sup>LG. BX.</sup> 37¢	C.H. SUGAR <sup>10# SACK</sup> 87¢
CLOROX OR PUREX 2 QT. BOTTLE - 2/25¢ ½ GAL. BOTTLE - 23¢	CHUBBY DOG FOOD 4 CANS 29¢

**GARDEN FRESH VEGETABLES**

RADISHES OR GREEN ONIONS 4 BUNCHES 10¢	FANCY #1 ASPARAGUS 2 LBS 25¢
FANCY #1 CARROTS 2 BUNCHES - 13¢	FRESH PEAS 2 LBS - 25¢

PRODUCE SUBJECT TO CHANGE WITHOUT NOTICE.

**CHOICE MEATS**



WILSON LAUREL SLICED BACON	39¢ 1b
HORMEL'S READY TO SERVE PICNIC HAMS	39¢ 1b
EASTERN GRAIN-FED LOIN END PORK ROASTS	43¢ 1b
WILSON CERTIFIED SKINLESS WEINERS	49¢ 1b
EASTERN GRAIN-FED PORK STEAK	53¢ 1b

PET MILK <sup>1 CAN</sup> 11¢	M.C.P. GRAPEFRUIT JUICE <sup>46 OZ CAN</sup> 33¢
SUNSHINE KRISPIE CRAX <sup>1 LB BOX</sup> 25¢	SOLID PACK <sup>LAR. 2½ CAN</sup> TOMATOES 17¢
HUNTS <sup>LAR. CAN</sup> PEACHES 19¢	BLUE WINNER <sup>LAR. 2½ CAN</sup> FRUIT COCKTAIL 21¢

MONARCH  
VAC. PACK  
COFFEE 72¢  
LB

OUR OWN BLEND  
COFFEE  
64¢  
LB

CAMPBELLS  
TOMATO  
SOUP <sup>3 CANS</sup> 29¢  
CAN

SURF <sup>LG. PKG</sup> NO RINSE 24¢	WESSON OIL 51¢ QT.
ROYAL <sup>6 BX</sup> GELATINE 6¢	TIDE <sup>LG. BX</sup> SOAP 24¢
BREAST OF CHICKEN CHUNK TUNA ½ CAN 27¢ CAN	HUNT'S TOMATO SAUCE <sup>3 CANS</sup> 14¢ CAN

**FROZEN FOODS**

**SNOW CROP**

CUT GREEN BEANS <sup>10 OZ PKG.</sup> 20¢	PEAS <sup>12 OZ PKG.</sup> 20¢
FORD HOOK LIMAS <sup>12 OZ PKG.</sup> - 25¢	SPINACH <sup>14 OZ PKG.</sup> 20¢
MIX VEG <sup>10 OZ PKG.</sup> 21¢	ORANGE JUICE <sup>CAN</sup> 23¢

**Free DELIVERY**

Call 8-5172

**CRISCO**  
3 LB. CAN  
73¢

**MENTONE SUPER MARKET**

1831 MENTONE BLVD. - OUR SHELF PRICES ARE EVERYONE ELSE'S SPECIALS

WE RESERVE THE RIGHT TO LIMIT QUANTITIES

PRICES FOR - 14th & 15th