

With a steadily growing population from 1500 in 1940 to 3500 in 1950, Mentone has kept pace by increasing home-sites to more than 1200 dwelling units, yet scenic space is still abundant.

POPULATION

About 13 miles east of the county seat, San Bernardino, on highway 190, at the entrance to mountain playgrounds, where both summer and winter sports abound. Many desert resorts are within half hours drive. Los Angeles and the Pacific ocean are two hours away.

LOCATION

Small and large citrus groves form the main industry in Mentone. No finer oranges are produced anywhere. Scientific poultry raising is second and rabbit raising holds great promise. Light manufacturing has found a place here, too. Both Santa Fe and Southern Pacific railroads service our industries.

INDUSTRIES

A modern new school building has been completed in Mentone, and a free bus service to High School in Redlands, whose fine school system is shared. Redlands business section is four miles from Mentone and boasts the Redlands University.

EDUCATION

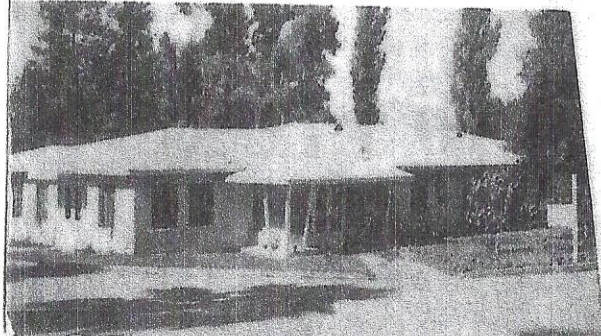
Mentone is unincorporated, having only county taxes. This tax is in the low bracket of Southern California counties. We have efficient fire and police protection, dial phone service, natural gas, electricity, two water systems, street lights, and a convenient shopping section.

FACILITIES

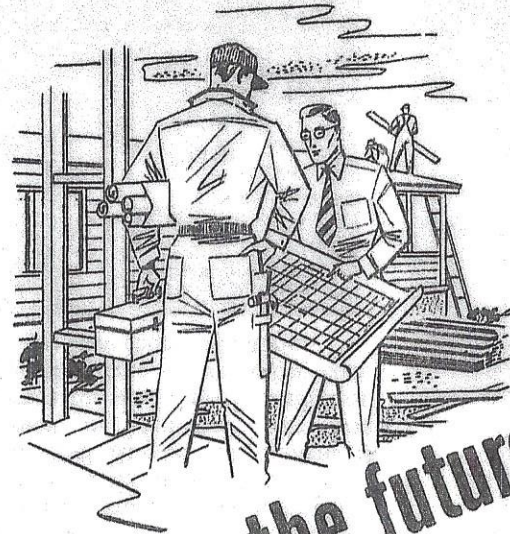
Mentone is on a gradual slope from the protective mountains to the broad San Bernardino Valley. Elevation is from 1700 to 2200 feet, above fog and smog and tempered by cool mountain and ocean breezes in summer. The warm dry desert air makes a delightful winter climate. Sunshine? — over 90% of the year. Average winter temperature 54 degrees, summer 72 degrees.

CLIMATE

ONE OF THE MENTONE HEALTH HAVEN BUILDINGS



MENTONE CALIFORNIA



BUILD for the future--

PLENTY OF CHOICE BUSINESS AND RESIDENTIAL REAL ESTATE AVAILABLE

Address all inquiries about Mentone to
MENTONE CHAMBER OF COMMERCE
Mentone, California

M
E
N
T
O
N
E

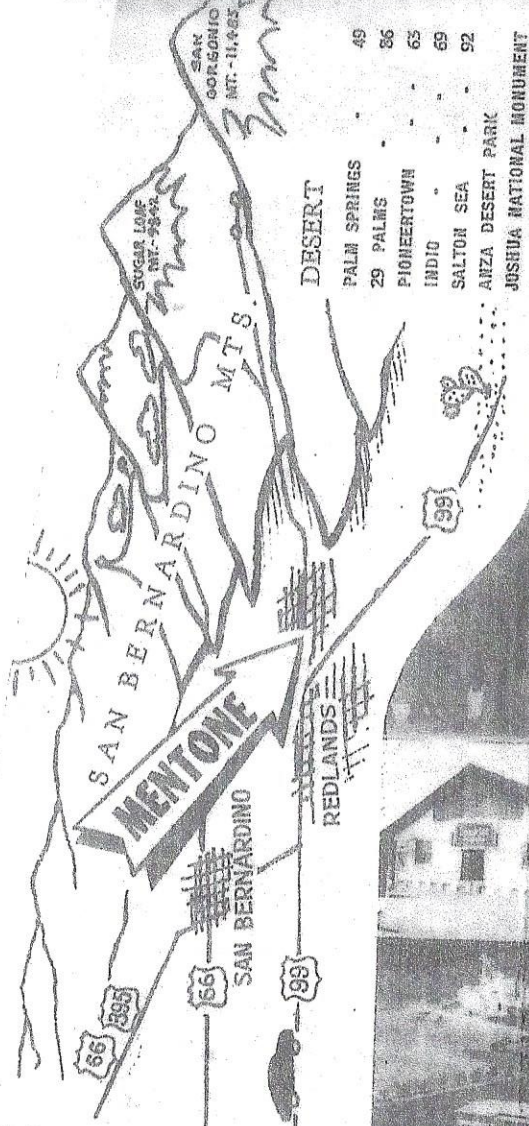
CALIFORN

BEACHES

- MALIBU
- SANTA MONICA
- VENICE
- HERRING
- REBONDO
- HUNTINGTON
- NEWPORT
- BALBOA
- OCEANSIDE
- LA JOLLA
- SAN DIEGO
- LAGUNA
- CORONADO

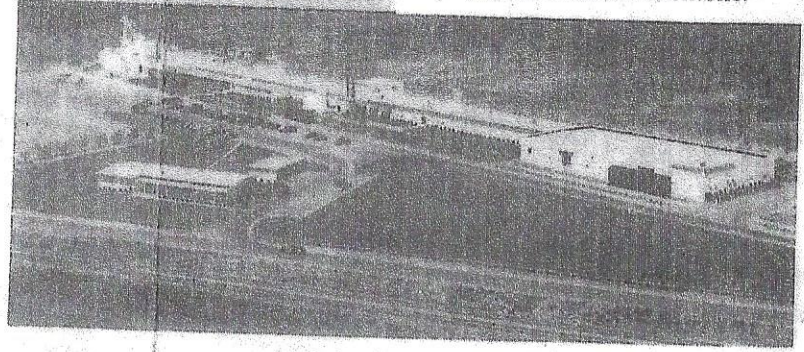
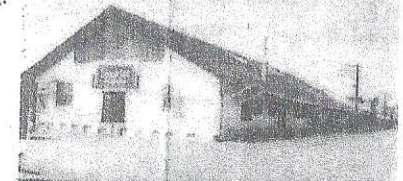
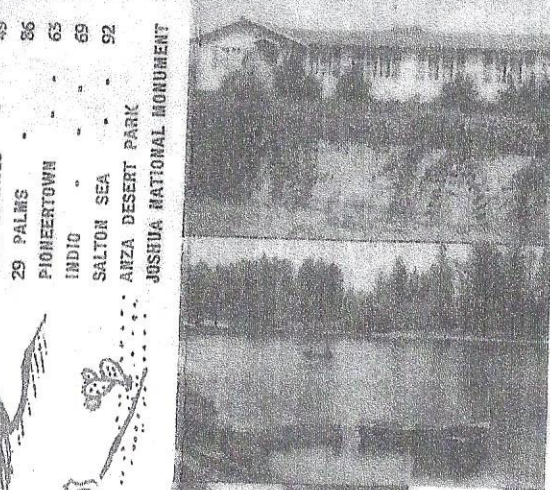
MOUNTAINS

- CRESTLINE - 24
- LAKE ARROWHEAD - 35
- BIG BEAR LAKE - 42
- GREEN VALLEY LAKE - 27
- BALDWIN LAKE - 47
- BARTON FLATS - 20
- FOREST HOME - 15
- LAKE GREGORY - 26
- IDYLLWILD - 61



- 49
- 26
- 63
- 69
- 92
- PALM SPRINGS
- 29 PALMS
- PIONEERTOWN
- INDIO
- SALTON SEA
- ANZA DESERT PARK
- JOSHUA NATIONAL MONUMENT

LOS ANGELES - 70 MI.



Mentone's modern new grammar school was doubled in size soon after its completion.

CLUBS

Various organizations comprise Mentone's social life. At left is the Womans Club building. The Lions Club and Scouts also have buildings.

CANYONS

Jenk's Lake, left, is one of many mountain settings within a few minutes drive. Mentone is the gateway to Mill Creek and Santa Ana Canyons.

CHURCHES

Warm friendliness greets the newcomer to Mentone churches. The Community Church shown is the oldest. Newest is the Mentone Baptist. Assembly of God is well established and the Church of God is under construction.

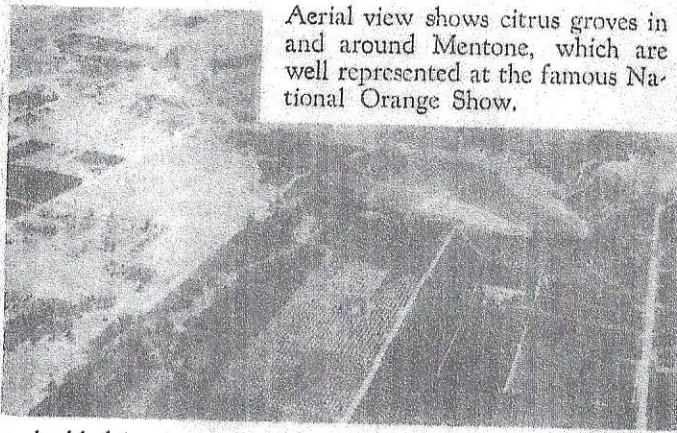
INDUSTRY

"Sunkist" oranges come from packing house shown left. Below — Universal Rundle Corp. plant is largest in Mentone. Site was chosen for ideal climatic conditions. For the same reason other companies have chosen Mentone.



HISTORY

Mentone, California was a nationally famous health resort through the forepart of the century. The Los Angeles-to-Mentone excursion route sent as many as fourteen trains per day into this sylian community. Health homes operate today, but Mentone has become an established residential town. Residents today reap the same benefits of pure air, sunshine and climate as did health seekers of 50 years ago. They enjoy small town friendliness and congenial atmosphere, as they look to a bright future of business as well.



Aerial view shows citrus groves in and around Mentone, which are well represented at the famous National Orange Show.